

2024
2025
SEASON

SPANO ▶



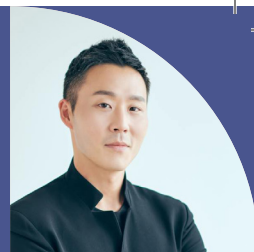
PAPONIU ▶



PINE ▼



LEE ▲



HANDLER ▶



RHODE ISLAND PHILHARMONIC ORCHESTRA

ROBERT SPANO, PRINCIPAL CONDUCTOR

TACO CLASSICAL SERIES

MONTGOMERY ▼



DEMIRJIAN ▲



SLATKIN ▶



ZUKERMAN ▼



KERN ▼



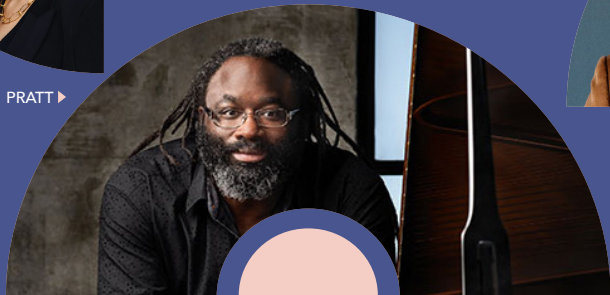
RIVERA ▼



LIVERMAN ▲



PRATT ▶



OPENING NIGHT!

RACHMANINOFF & GERSHWIN

Saturday, Sept. 14, 2024 • 7:30pm

Leonard Slatkin, conductor • Olga Kern, piano

NELSON: *Sarabande: For Katherine in April*

CINDY McTEE: *Tempus Fugit*

RACHMANINOFF: *Rhapsody on*

a Theme of Paganini

HOVHANESS: *Symphony No.2*

(Mysterious Mountain)

GERSHWIN: *An American in Paris*

ZUKERMAN

PLAYS & CONDUCTS

BEETHOVEN

Saturday, Oct. 19, 2024 • 7:30pm

Pinchas Zukerman, conductor/violin

HAYDN: *Violin Concerto in C major*

HAYDN: *Symphony No.49 (La passione)*

BEETHOVEN: *Romance No.1*

BEETHOVEN: *Symphony No.2*

THE PASSION OF TCHAIKOVSKY

Saturday, Nov. 9, 2024 • 7:30pm

Anna Handler, conductor • Blake Pouliot, violin

JOHN ADAMS: *The Chairman Dances:*

Foxtrot for Orchestra

MENDELSSOHN: *Violin Concerto*

TCHAIKOVSKY: *Symphony No.1*

(Winter Daydreams)

SPANO CONDUCTS

BEETHOVEN'S EROICA

Saturday, Jan. 18, 2025 • 7:30pm

Robert Spano, conductor

SHOSTAKOVICH: *Festive Overture*

Side-by-Side performance with students from

the RI Philharmonic Music School

JENNIFER HIGDON: *All Things Majestic*

BEETHOVEN: *Symphony No.3 (Eroica)*

BOLÉRO!

Saturday, Feb. 15, 2025 • 7:30pm

Earl Lee, conductor • Awadagin Pratt, piano

RAVEL: *Boléro*

JESSIE MONTGOMERY: *Rounds*

RACHMANINOFF: *Symphonic Dances*

RHAPSODY IN BLUE

Saturday, March 15, 2025 • 7:30pm

Aram Demirjian, conductor • Jeffrey Biegel, piano

IVES: *Fugue (from Symphony No.4)*

PETER BOYER: *Rhapsody in Red, White & Blue*

GERSHWIN: *Rhapsody in Blue*

DAWSON: *Negro Folk Symphony*

Sponsored by



SAINT-SAËNS

THUNDERING ORGAN SYMPHONY

Saturday, April 12, 2025 • 7:30pm

Radu Paponiu, conductor • Rachel Barton Pine, violin

GABRIELA ORTIZ: *Kauyumari*

BILLY CHILDS: *Violin Concerto No.2*

SAINT-SAËNS: *Symphony No.3 (Organ)*

SPANO CONDUCTS

BRAHMS' REQUIEM

Saturday, May 10, 2025 • 7:30pm

Robert Spano, conductor

Jessica Rivera, soprano

Will Liverman, baritone

Providence Singers, Christine Noel, Artistic Director

VAUGHAN WILLIAMS: *Fantasia on*

a Theme by Thomas Tallis

BARBER: *Knoxville: Summer of 1915*

BRAHMS: *A German Requiem*

ADD ON:

HANDEL'S MESSIAH

Sunday, Dec. 15, 2024 • 3:00pm

Christine Noel, conductor

Providence Singers,

Christine Noel, Artistic Director

Eleonore Cockerham, soprano

Tamara Mumford, mezzo-soprano

Thomas Cooley, tenor

Nicholas Newton, baritone

All TACO Classical Series concerts are held on Saturdays at 7:30pm at The VETS, Avenue of the Arts, Providence. Artists and programs are subject to change.

SUBSCRIBE TODAY!

401.248.7000 | BOXOFFICE@RIPHIL.ORG

Bring your group & save! 401.248.7044 • BoxOffice@riphil.org